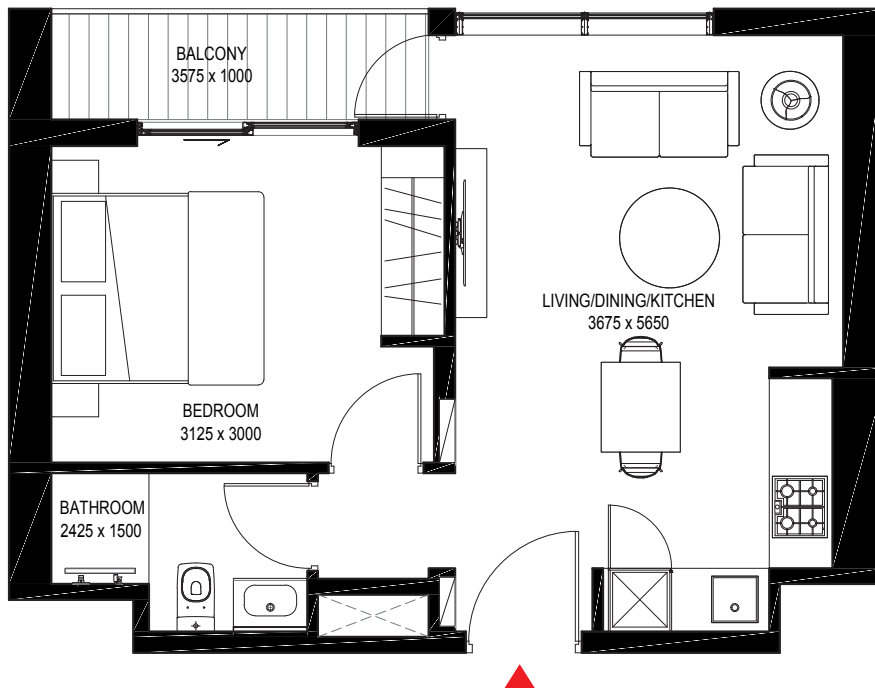
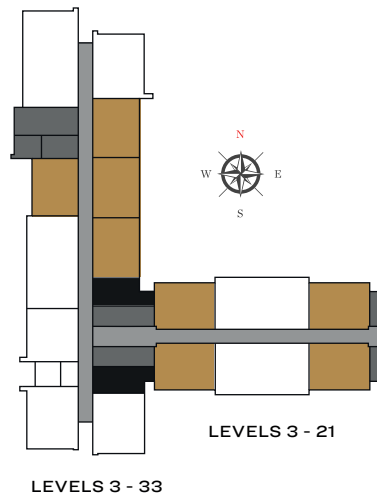


**1 BEDROOM - OPTIMA  
TYPE - A**

Suite area - 439.06 Sq.Ft.

Terrace - 49.30 Sq.Ft.

Net Saleable Area - 488.36 Sq.Ft.



**1 BEDROOM - OPTIMA  
TYPE A1**

Suite area - 439.06 Sq.Ft.

Terrace - 135.41 Sq.Ft.

Net Saleable Area - 574.47 Sq.Ft.



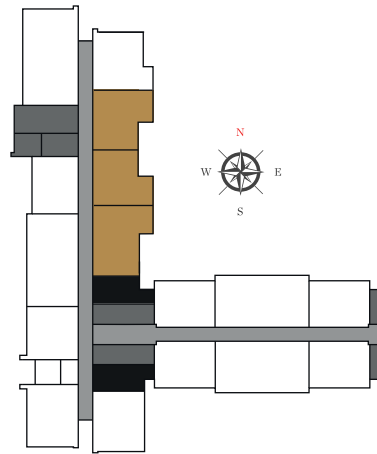
Downtown



Dubai Creek



Ras Al Khor  
Wildlife Sanctuary



LEVELS 02



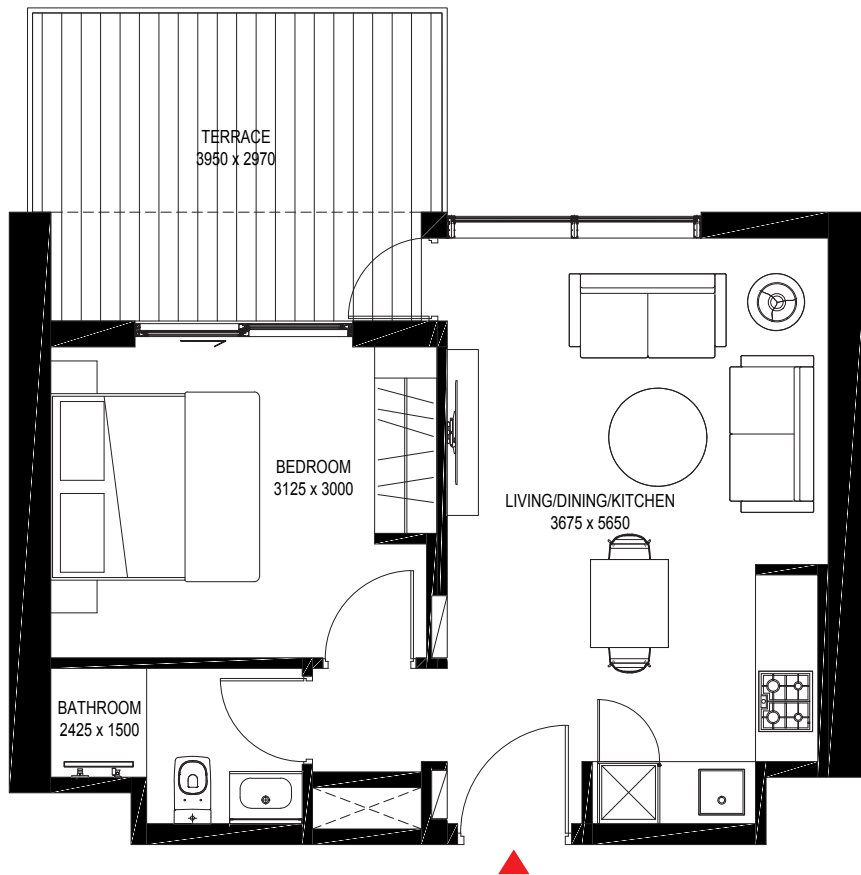
Meydan One Mall



Dubai Canal



Hartland Estates



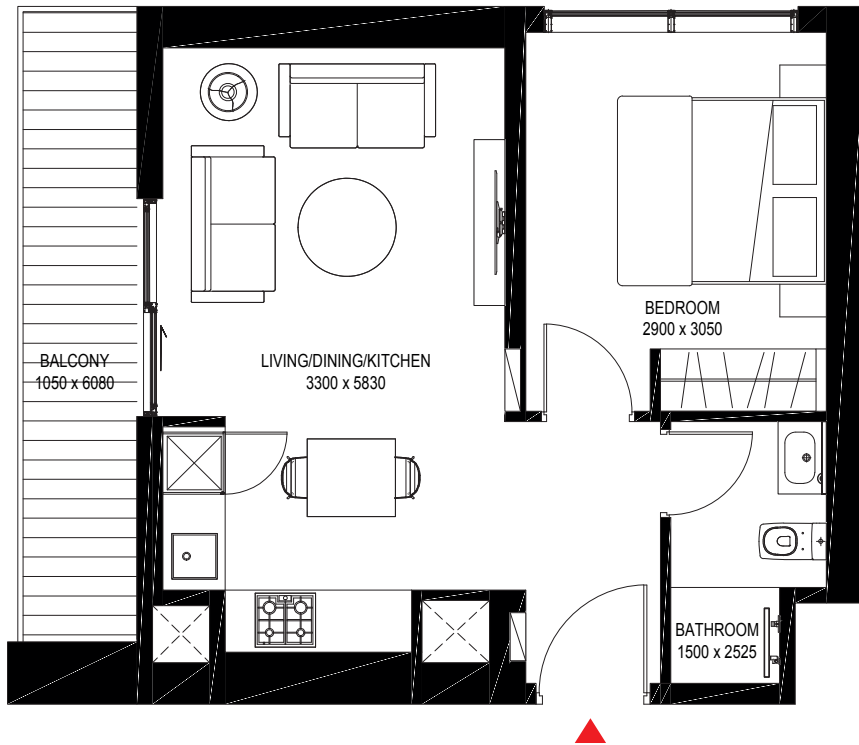
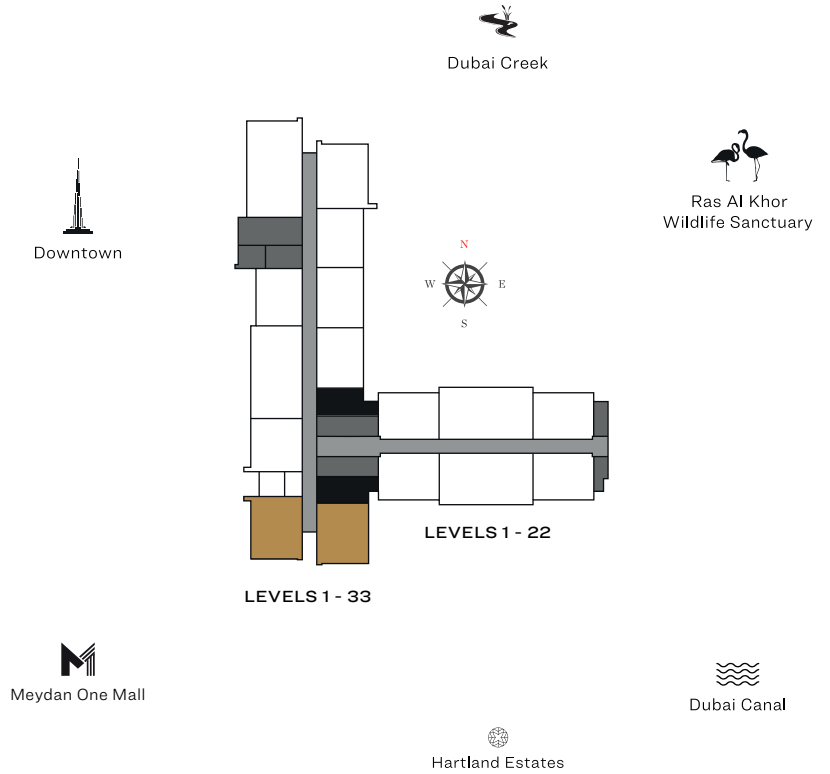
Disclaimer: 1. All dimensions are in metric, measured to wall finishes. 2. All materials, dimensions & drawings are approximate. 3. Information is subject to change without notice, at developer's absolute discretion. 4. Actual area may vary from the stated area. 5. Drawing are not to scale. 6. All images used are for illustrative purpose only and do not represent the actual size, features, specifications, fittings and furnishings. 7. The developer reserves the right to make revisions/ alterations, at its absolute discretion, without any liability whatsoever.

1 BEDROOM - OPTIMA  
TYPE B

Suite area - 448.21 Sq.Ft.

Balcony Area - 88.16 Sq.Ft.

Net Saleable Area - 536.37 Sq.Ft.



**1 BEDROOM - OPTIMA  
TYBE - B1**

Suite area - 501.28 Sq.Ft.

Balcony Area - 209.04 Sq.Ft.

Net Saleable Area - 710.31 Sq.Ft.



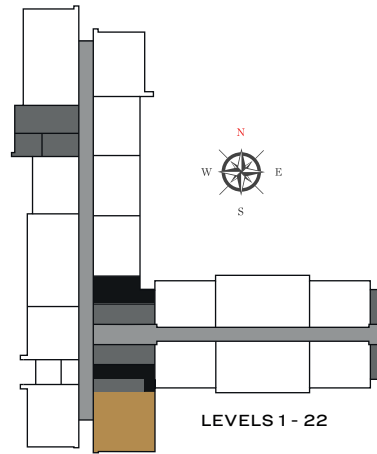
Downtown



Dubai Creek



Ras Al Khor  
Wildlife Sanctuary



LEVELS 1 - 22

LEVEL 01



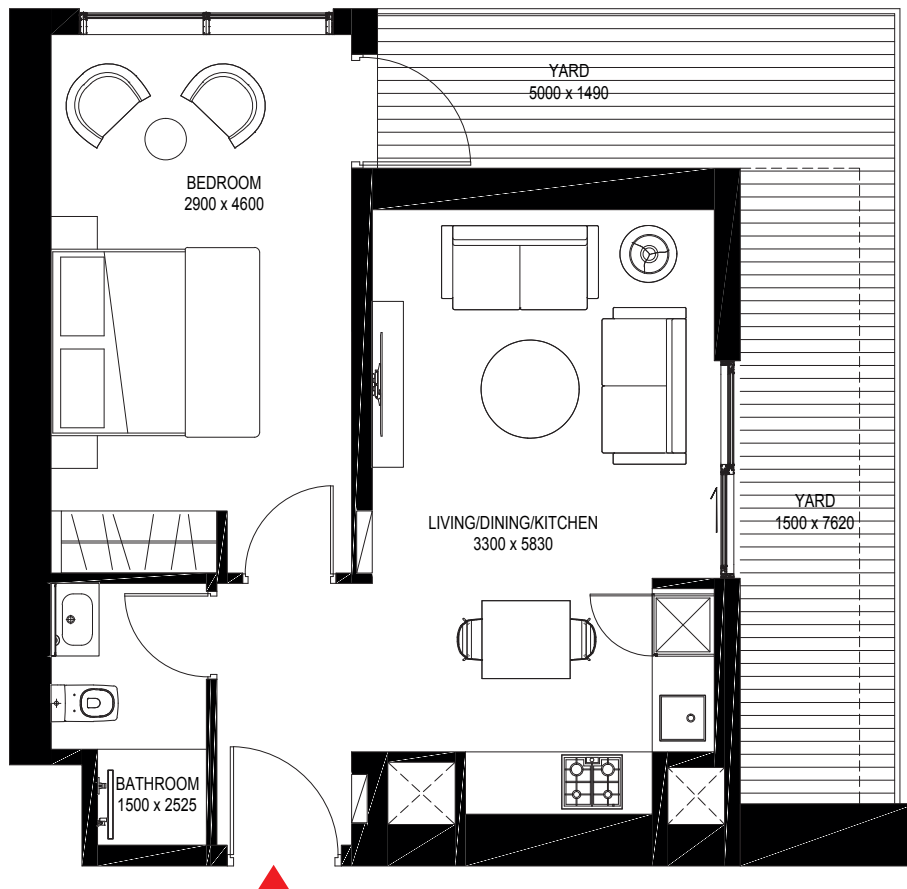
Meydan One Mall



Dubai Canal



Hartland Estates

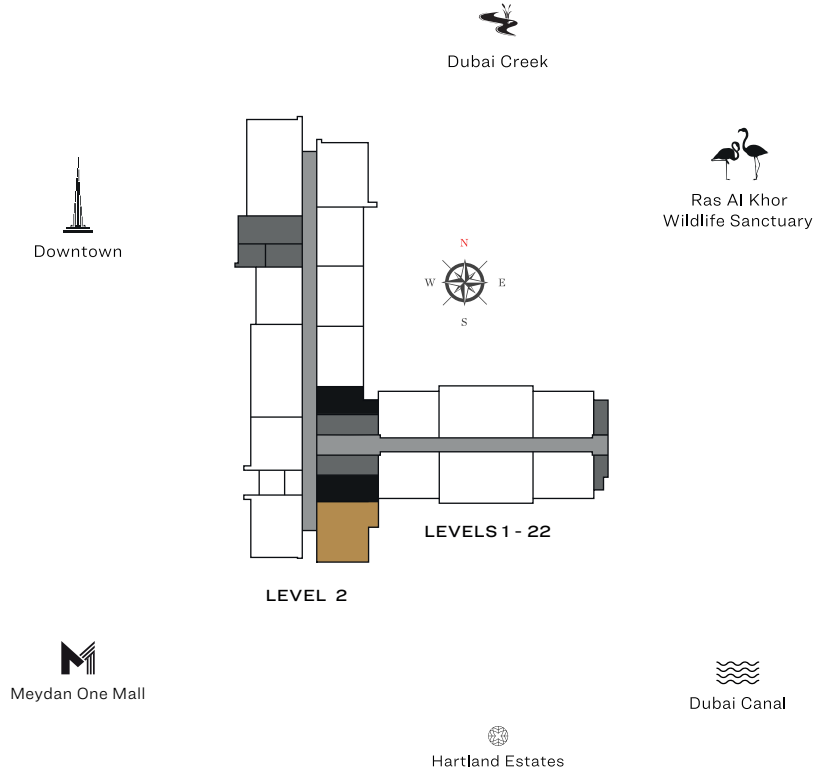


1 BEDROOM - OPTIMA  
TYP B 2

Suite area - 448.42 Sq.Ft.

Balcony Area - 151.34 Sq.Ft.

Net Saleable Area - 599.77 Sq.Ft.



1 BEDROOM - OPTIMA  
TYPE D

Suite area - 461.56 Sq.Ft.

Balcony Area - 100.64 Sq.Ft.

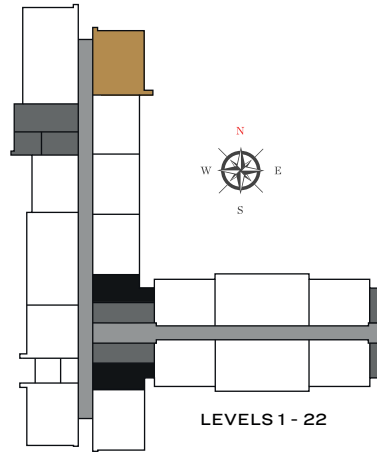
Net Saleable Area - 562.20 Sq.Ft.



Dubai Creek



Ras Al Khor  
Wildlife Sanctuary



LEVELS 1 - 22

LEVELS 3 - 33



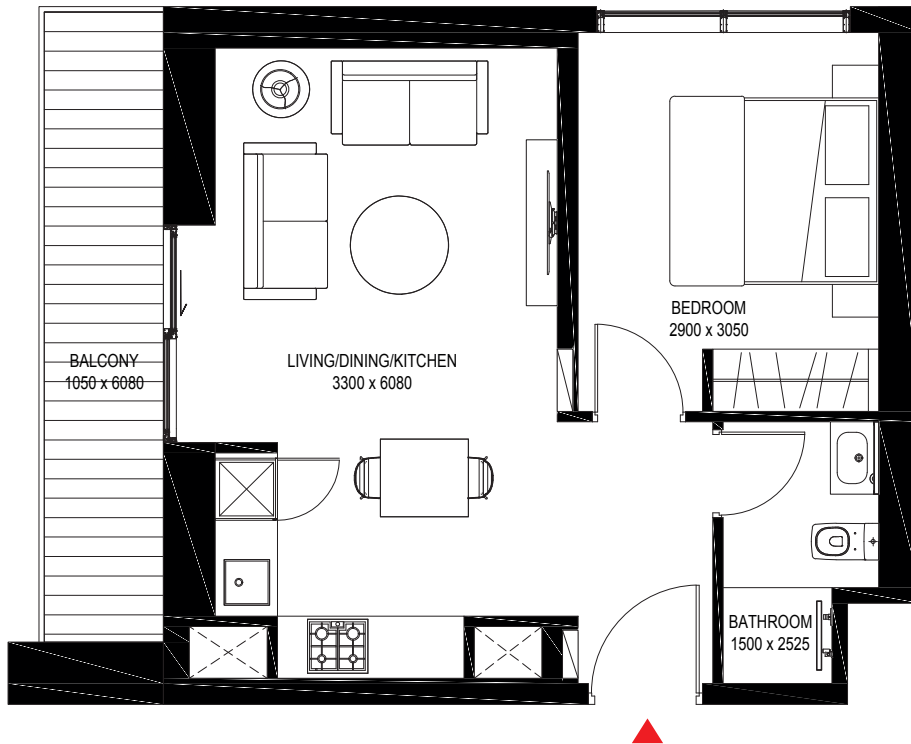
Meydan One Mall



Dubai Canal



Hartland Estates

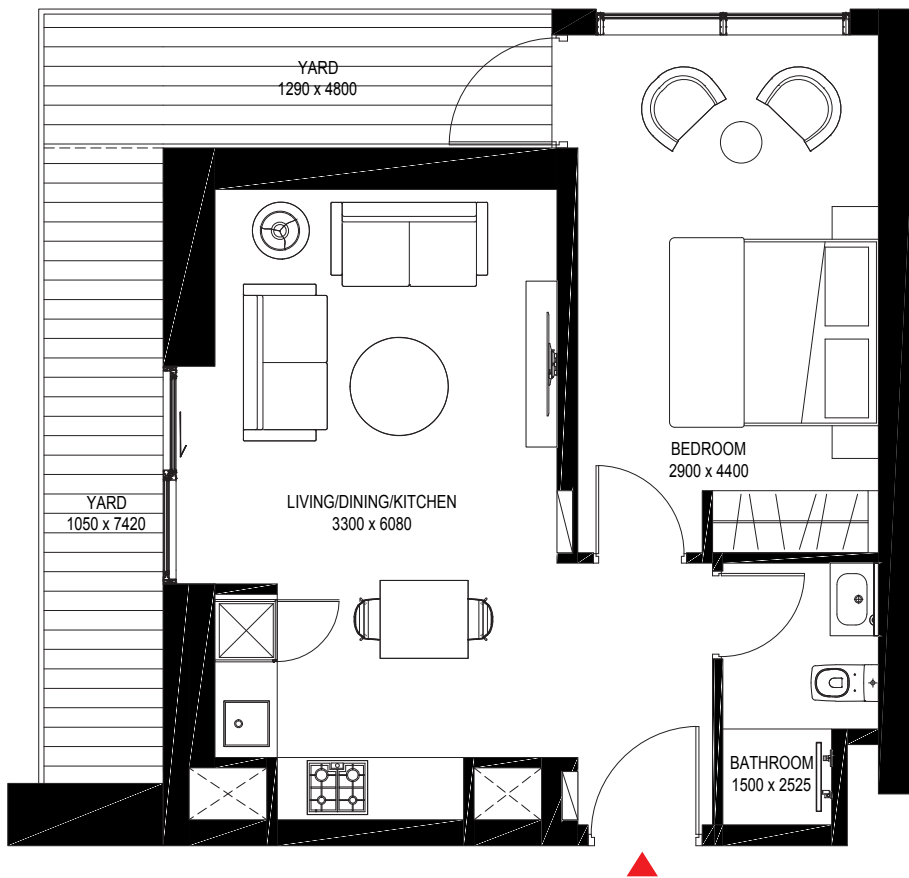
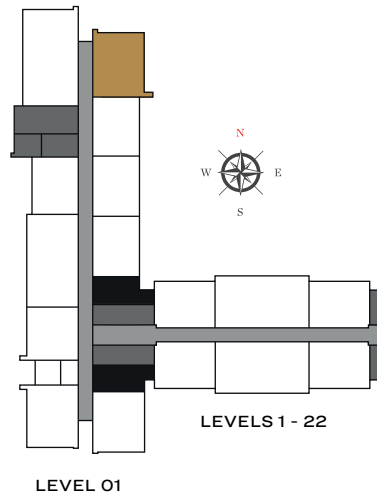


**1 BEDROOM - OPTIMA  
TYPE D1**

Suite area - 507.84 Sq.Ft.

Balcony Area - 182.13 Sq.Ft.

Net Saleable Area -689.97 Sq.Ft.



Disclaimer: 1. All dimensions are in metric, measured to wall finishes. 2. All materials, dimensions & drawings are approximate. 3. Information is subject to change without notice, at developer's absolute discretion. 4. Actual area may vary from the stated area. 5. Drawing are not to scale. 6. All images used are for illustrative purpose only and do not represent the actual size, features, specifications, fittings and furnishings. 7. The developer reserves the right to make revisions/ alterations, at its absolute discretion, without any liability whatsoever.

1 BEDROOM - OPTIMA  
TYPE D 2

Suite area - 461.77 Sq.Ft.

Balcony Area - 153.28 Sq.Ft.

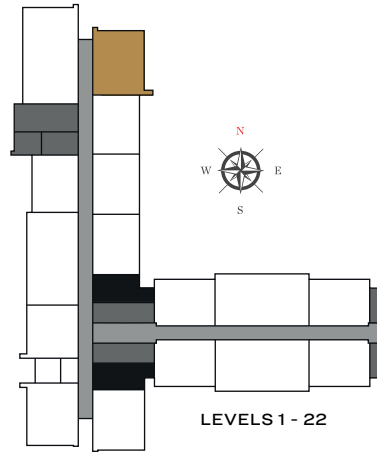
Net Saleable Area -615.05 Sq.Ft.



Dubai Creek



Ras Al Khor  
Wildlife Sanctuary



LEVEL 02

LEVELS 1 - 22



Meydan One Mall



Dubai Canal



Hartland Estates





# 1 BEDROOM - OPTIMA TYPE E

Suite area - 564.57 Sq.Ft.

Balcony Area - 90.47 Sq.Ft.

Net Saleable Area -655.31 Sq.Ft.



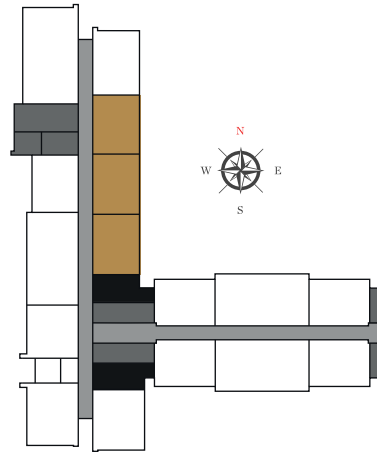
Downtown



Dubai Creek



Ras Al Khor  
Wildlife Sanctuary



LEVEL 01



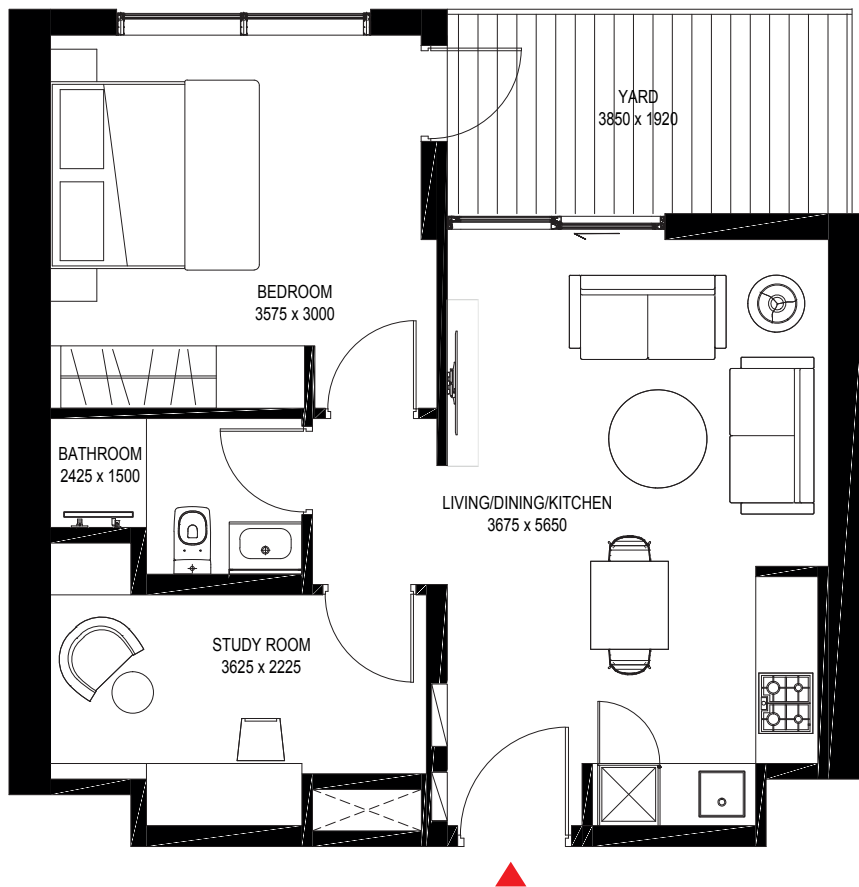
Meydan One Mall



Dubai Canal



Hartland Estates

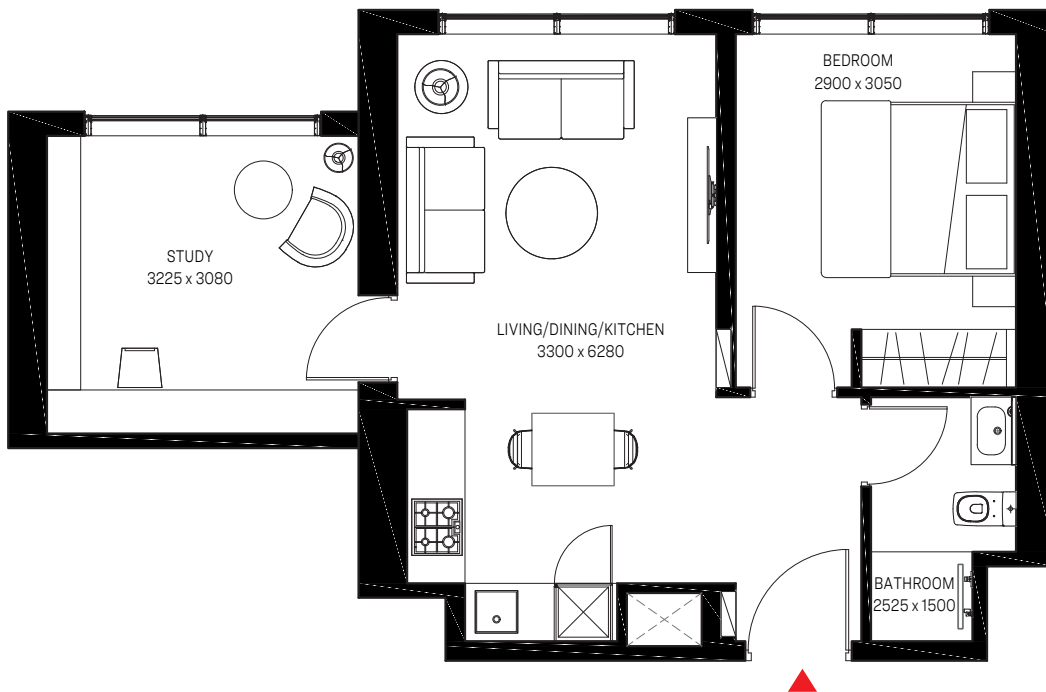
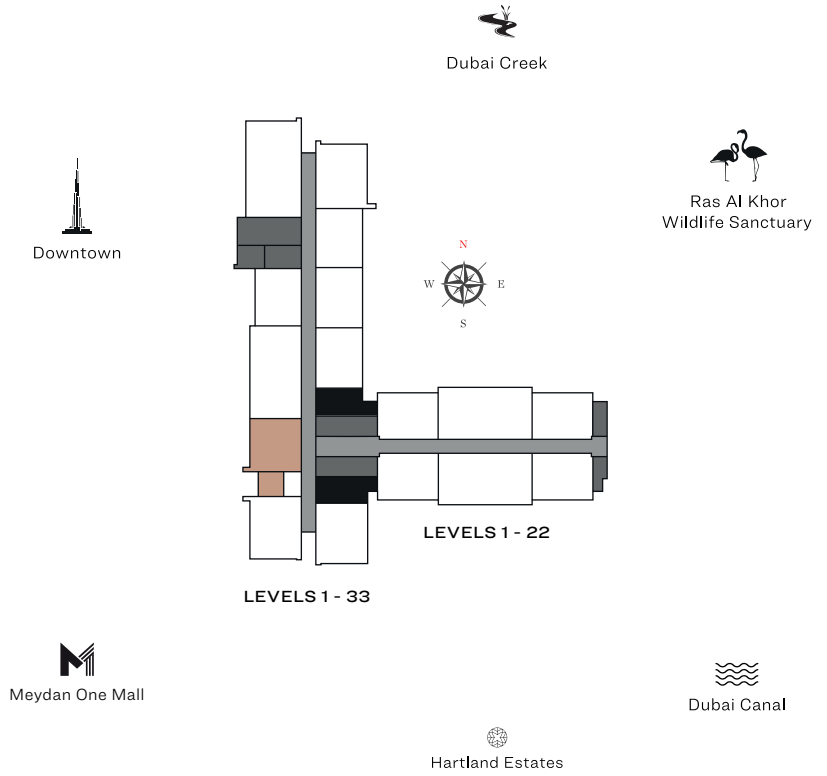


# 1 BEDROOM - PRIMA TYPE C

Suite area - 584.16 Sq.Ft.

Balcony Area - 0 Sq.Ft.

Net Saleable Area -584.16 Sq.Ft.



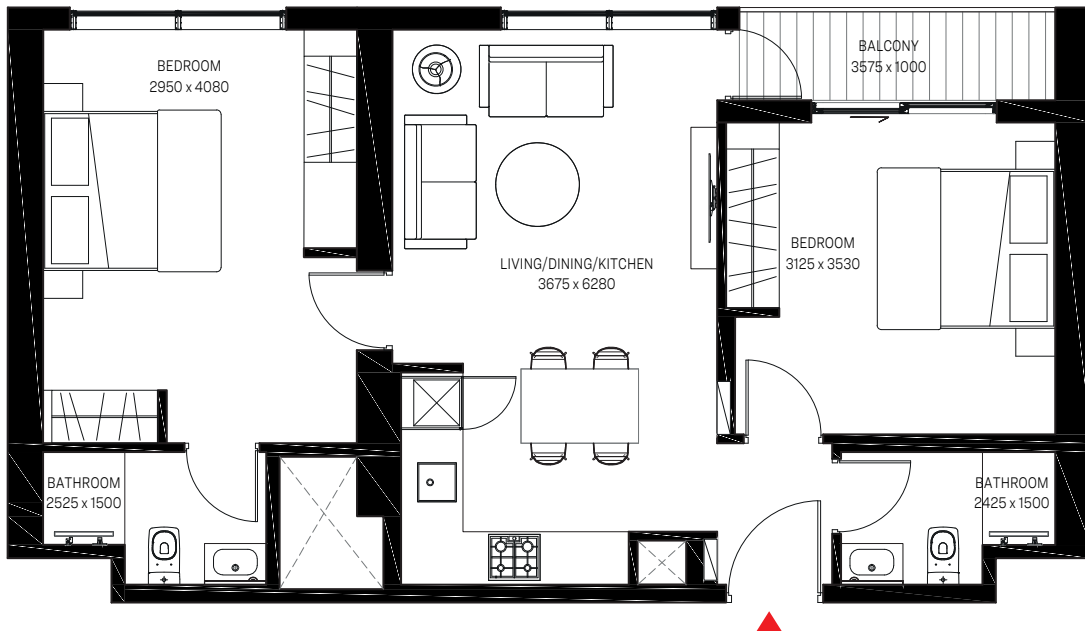
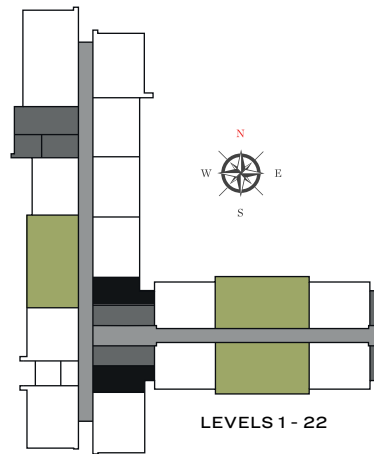
Disclaimer: 1. All dimensions are in metric, measured to wall finishes. 2. All materials, dimensions & drawings are approximate. 3. Information is subject to change without notice, at developer's absolute discretion. 4. Actual area may vary from the stated area. 5. Drawing are not to scale. 6. All images used are for illustrative purpose only and do not represent the actual size, features, specifications, fittings and furnishings. 7. The developer reserves the right to make revisions/ alterations, at its absolute discretion, without any liability whatsoever.

**2 BEDROOM - OPTIMA  
TYPE B**

Suite Area - 746.69 Sq.Ft.

Balcony Area - 49.30 Sq.Ft.

Net Saleable Area - 795.99 Sq.Ft.



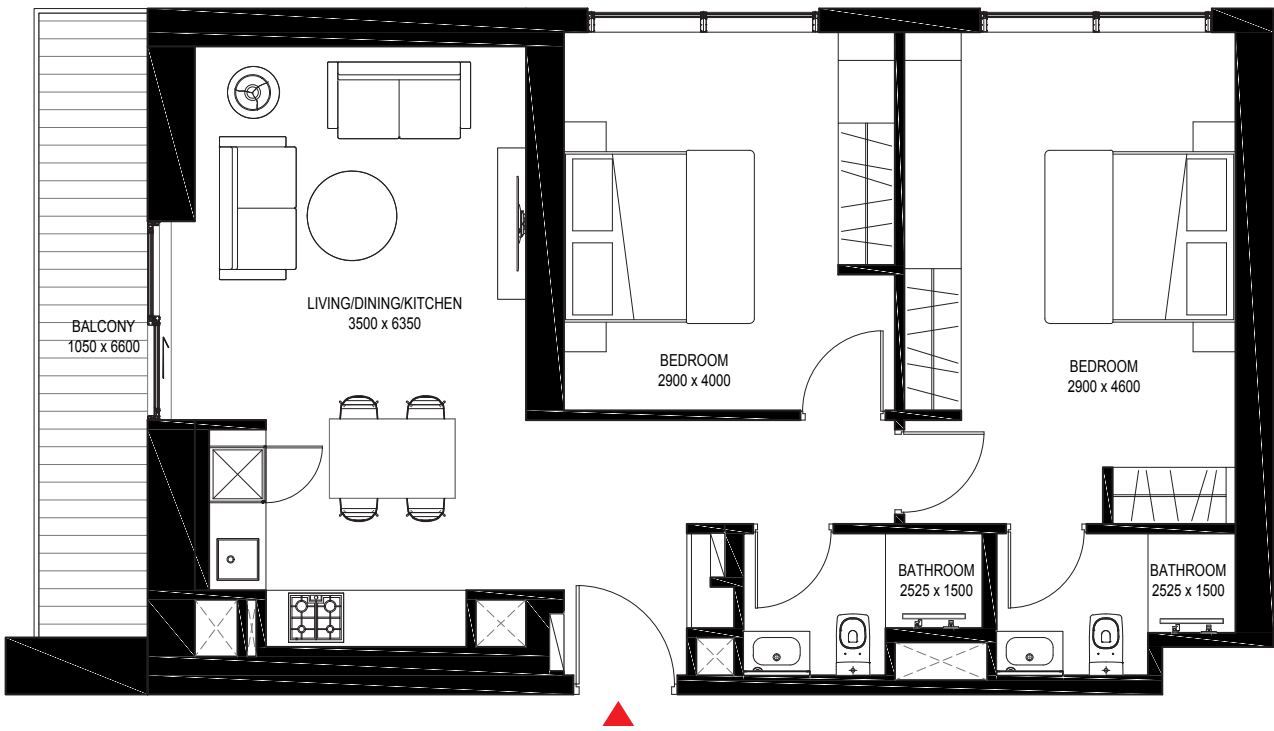
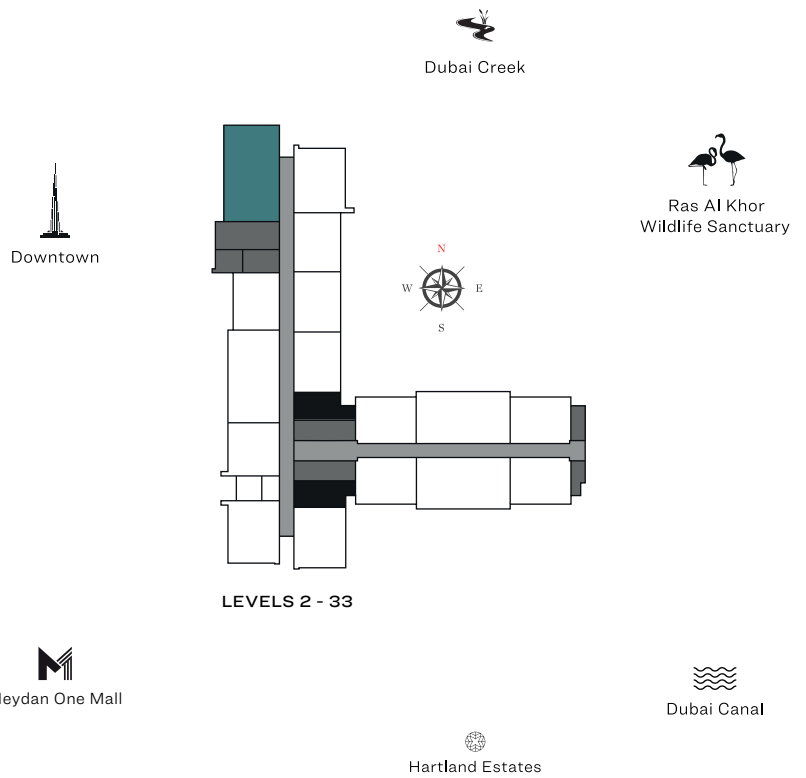
Disclaimer: 1. All dimensions are in metric, measured to wall finishes. 2. All materials, dimensions & drawings are approximate. 3. Information is subject to change without notice, at developer's absolute discretion. 4. Actual area may vary from the stated area. 5. Drawing are not to scale. 6. All images used are for illustrative purpose only and do not represent the actual size, features, specifications, fittings and furnishings. 7. The developer reserves the right to make revisions/ alterations, at its absolute discretion, without any liability whatsoever.

**2 BEDROOM - PRIMA  
TYPE A**

Suite Area - 833.88 Sq.Ft.

Balcony Area - 109.36 Sq.Ft.

Net Saleable Area - 943.24 Sq.Ft.



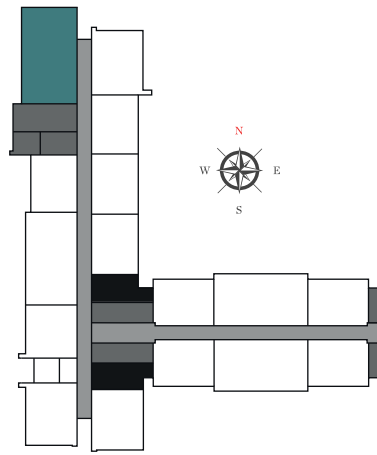
Disclaimer: 1. All dimensions are in metric, measured to wall finishes. 2. All materials, dimensions & drawings are approximate. 3. Information is subject to change without notice, at developer's absolute discretion. 4. Actual area may vary from the stated area. 5. Drawing are not to scale. 6. All images used are for illustrative purpose only and do not represent the actual size, features, specifications, fittings and furnishings. 7. The developer reserves the right to make revisions/ alterations, at its absolute discretion, without any liability whatsoever.

2 BEDROOM - PRIMA  
TYPE A1

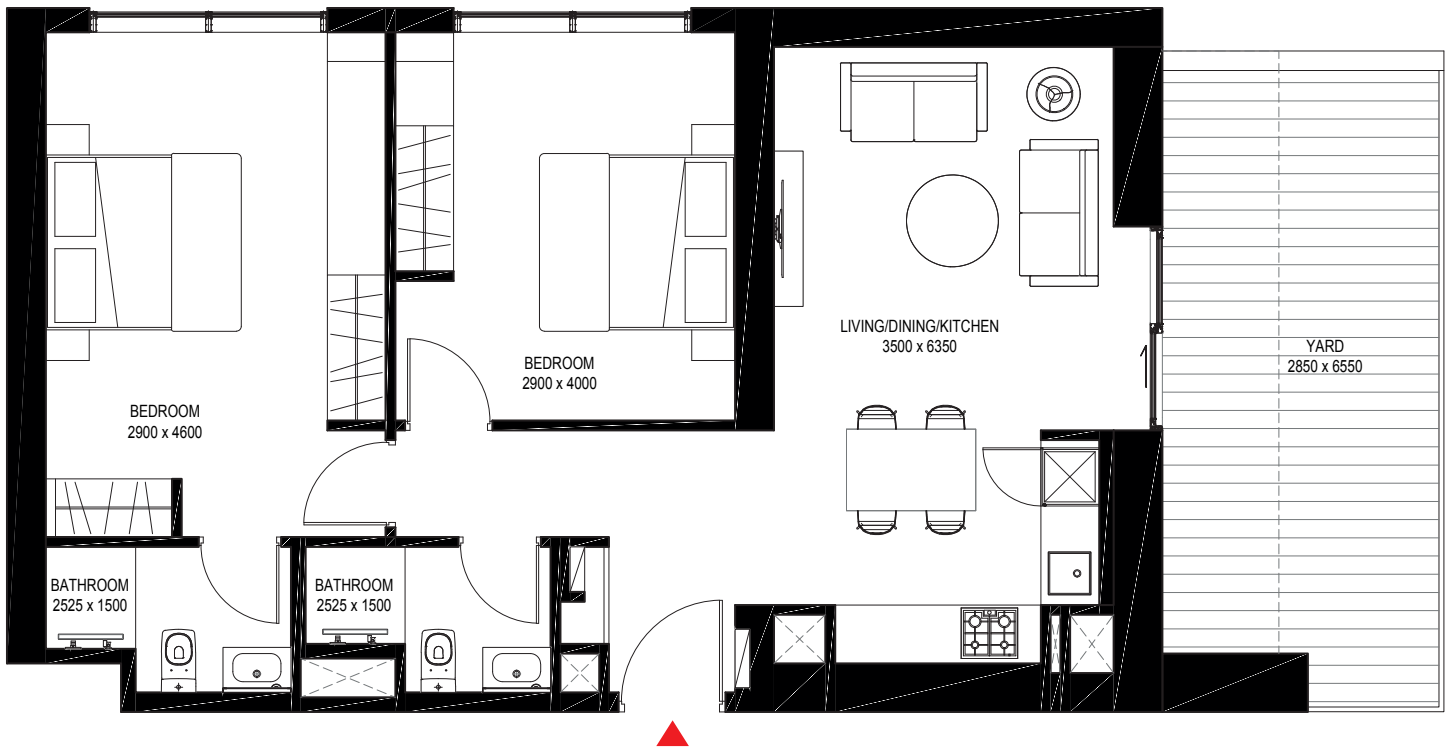
Suite area - 833.88 Sq.Ft.

Balcony Area - 226.04 Sq.Ft.

Net Saleable Area - 1,059.92 Sq.Ft.



LEVEL 01



Disclaimer: 1. All dimensions are in metric, measured to wall finishes. 2. All materials, dimensions & drawings are approximate. 3. Information is subject to change without notice, at developer's absolute discretion. 4. Actual area may vary from the stated area. 5. Drawing are not to scale. 6. All images used are for illustrative purpose only and do not represent the actual size, features, specifications, fittings and furnishings. 7. The developer reserves the right to make revisions/ alterations, at its absolute discretion, without any liability whatsoever.